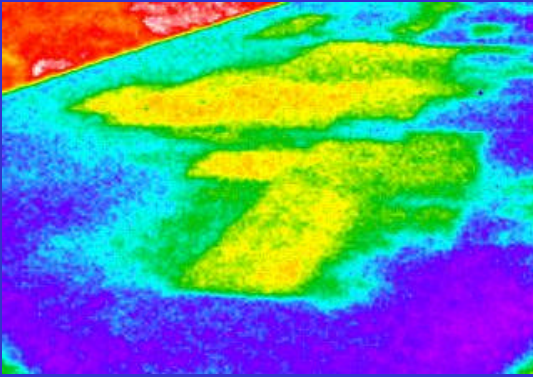
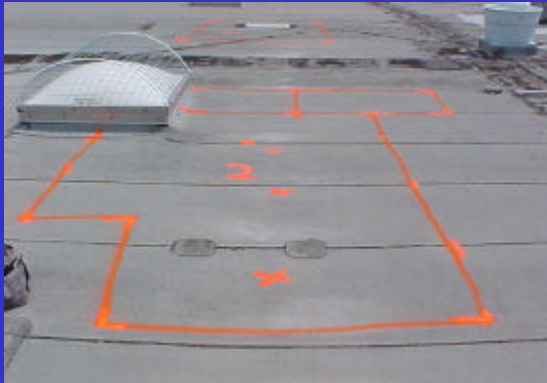


INFRARED THERMOGRAPHIC MOISTURE SURVEY



Thermogram of Wet Insulation



Anomaly Area Denoted on Roof Surface



Roof Core and Moisture Meter Reading

An infrared thermographic moisture survey is a non-invasive method for identifying areas of the roof that contain entrapped moisture within the roof assembly. The survey can be performed for the following purposes: 1) As a supplement to a roof condition assessment; 2) For annual inspection/maintenance programs; 3) Verification and/or documentation of physical damage of a roof due to storm/weather related events or other natural or man-made physical force; or 4) Determination of baseline roof condition upon completion of the new installation.

The infrared survey is performed in general accordance with ASTM C 1153 “Standard Practice for the Location of Wet Insulation in Roofing Systems Using Infrared Imaging.” The survey is performed utilizing a hand-held infrared camera and walking the roof areas, viewing the roof surface through the camera in order to locate thermal anomalies (surface temperature differences). Locations of thermal anomalies, typically associated with “wet” roof substrate materials, if any, are marked on the roof surface with spray paint and recorded on a Moisture Survey Plan. Verification of the conditions of the insulation located within designated thermal anomalies are performed at representative locations via roof cores and/or moisture probes. The sampling (coring) and subsequent patching is performed in general accordance with procedures developed by the U.S. Army Cold Regions Research and Engineering Laboratory (CRREL). Moisture probes are typically performed at core locations in order to document the presence of moisture within the roof materials. Roof material samples are retained for determination of moisture content by Gravimetric Analysis. Gravimetric Analysis is a determination of the moisture content of a particular material based on the dry weight performed by standard laboratory dehydration procedures, Standard Method ASTM D 2939.

When properly executed, non-destructive moisture surveys can be effective tools for monitoring/documenting the condition of substrate materials (insulation board and absorptive decking material) in new or old roofing systems. Costs associated with these surveys vary, ranging from \$0.01 to \$0.25 per square foot of area surveyed – depending on the comprehensiveness of the scope of the survey, size and configuration of the roof being surveyed. Whatever the initial cost of the survey, the information gained consistently results in providing the facility Owner/Manager with savings and a direct immediate return on this investment.

PRICE CONSULTING, INC.

211 Highland Cross Drive
Suite 220

Houston, Texas 77073

281/209-1724 Phone

281/209-2724 Fax

800/966-6088 Toll Free

www.priceconsulting.com

